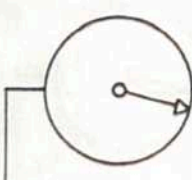


BAUHERR  
 BAUGESUCH  
**UMBAU BAUERNHAUS IN GEISINGEN**  
**MÖSSNER UND WALLMERSPERGER**

*G. Wallmerspiger*  
 ARCHITEKT  
**KELLER**

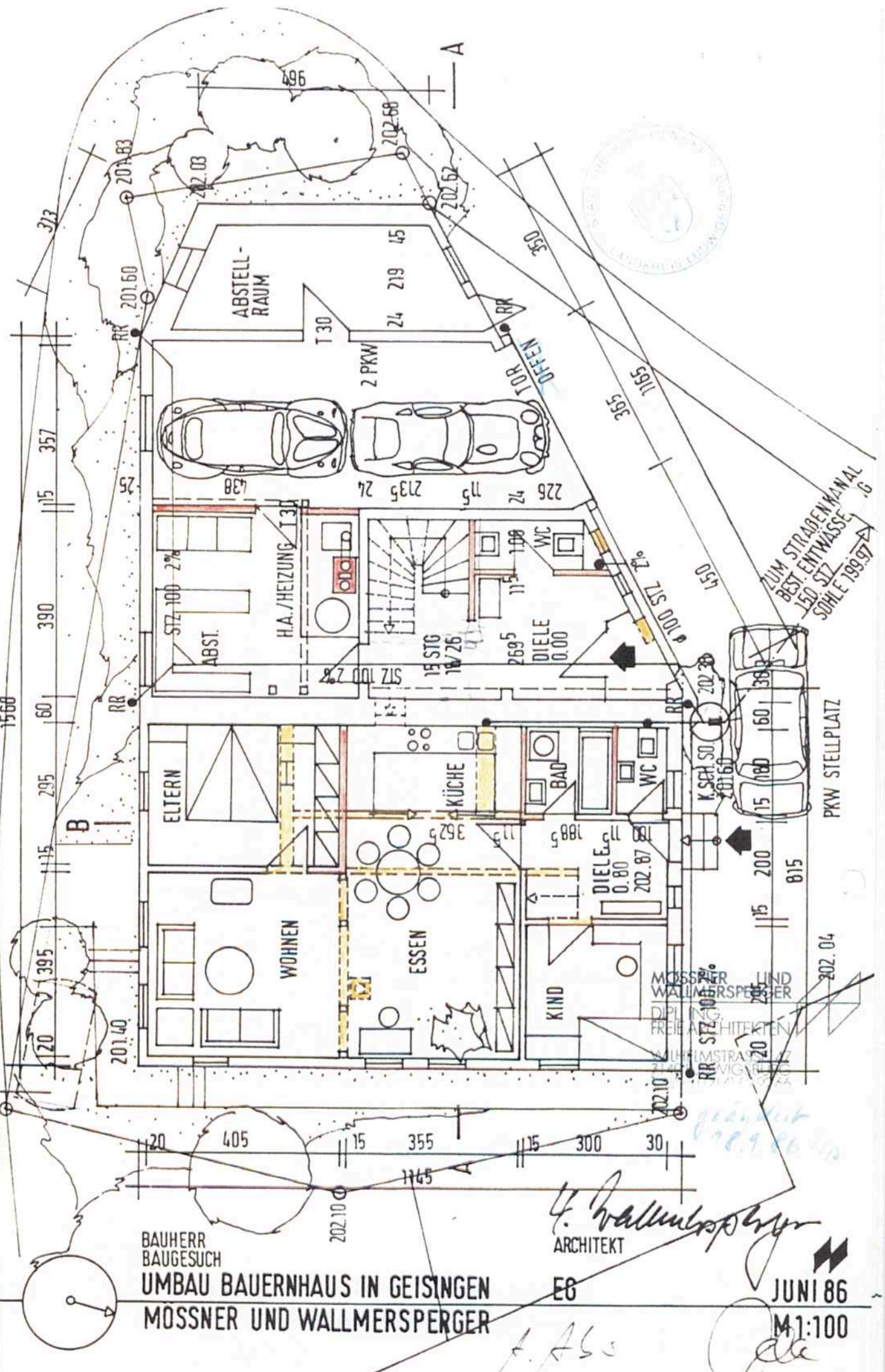
JUNI 86  
 M 1:100

*d. Hs*



FLUSSIGGASTANK ERÜBERDECKT  
1,2 TO / 250x125

RINGSTRASSE



BAUHERR  
BAUGESUCH  
**UMBAU BAUERNHAUS IN GEISINGEN**  
**MOSSNER UND WALLMERSPERGER**

*G. Wallmersperger*  
ARCHITEKT

E6

JUNI 86

M1:100

*A. Als*  
*Alle*

MOSSNER UND WALLMERSPERGER  
DIPLOM-ARCHITECTEN  
FREIARCHITECTEN  
ALPHIMSTRASSE 12  
7440 WIGGIG  
07141 300-110

ZUM STRASSENKANAL  
BEST ENTWASSE  
150 STZ  
SOHLE 199,97

PKW STELLPLATZ

202.04

RR STZ 100 2%

K.SCH SO 201,60

RR STZ 100 2%

RR STZ 100 2%

RR STZ 100 2%

RR STZ 100 2%

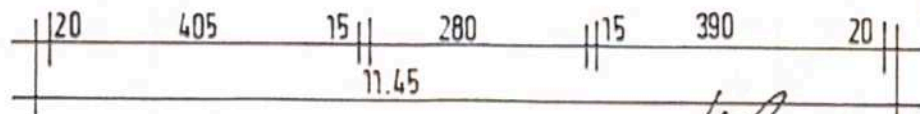
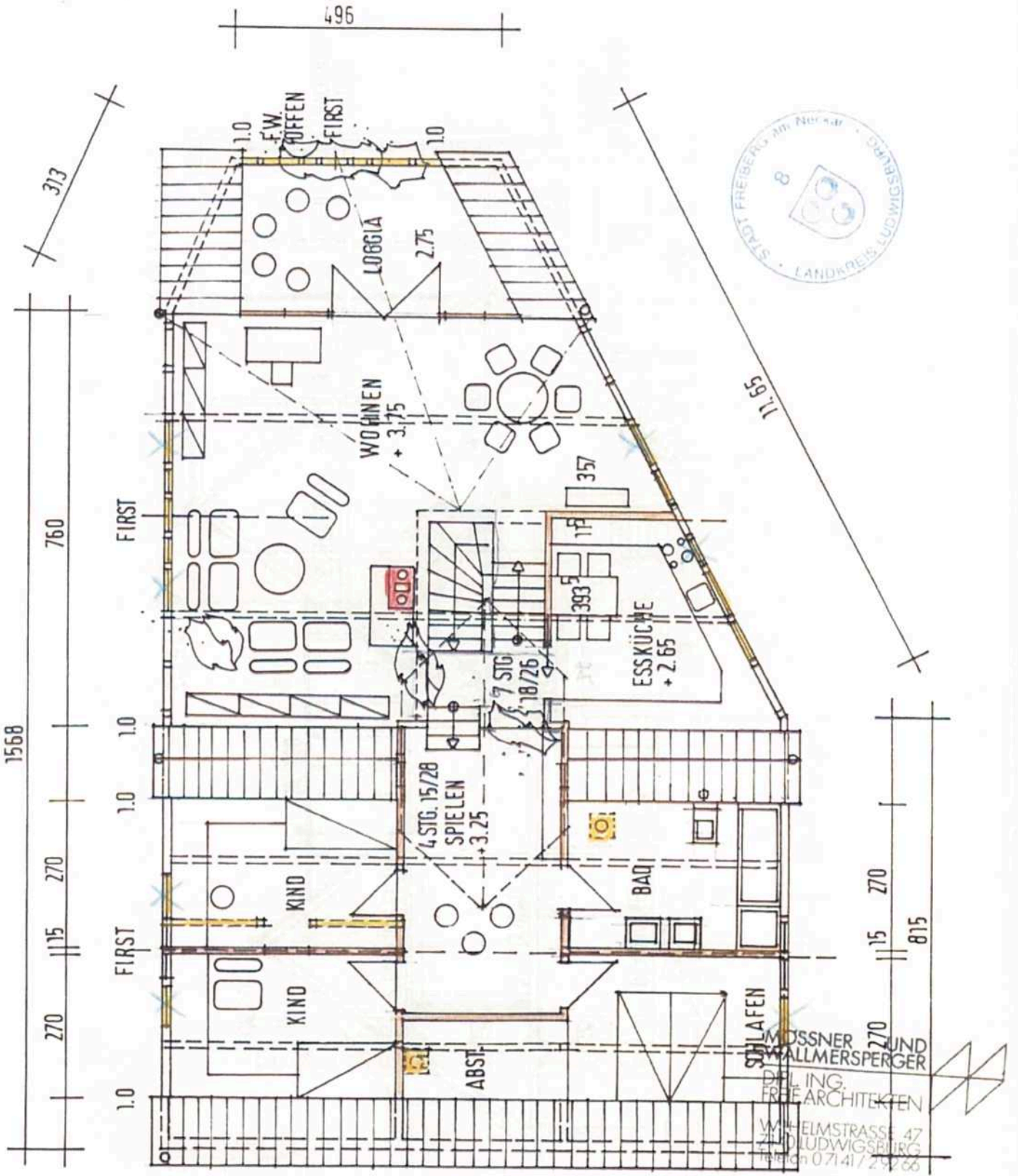
RR STZ 100 2%

RR STZ 100 2%

RR STZ 100 2%

RR STZ 100 2%

RR STZ 100 2%



BAUHERR  
BAUGESUCH  
**UMBAU BAUERNHAUS IN GEISINGEN**  
**MOSSNER UND WALLMERSPERGER**

*F. Dillinger*  
ARCHITEKT

DG

JUNI 86  
M 1:100



*L. Ass*

*Handwritten initials and notes in blue ink.*